

PLC PARTNER



**PACIFIC
LOGGING
CONGRESS**
9TH LIVE IN-WOODS SHOW

Thank you! You made the 9th PLC Live In-Woods Show a success.

The 9th in-wood show took place September 21-23, 2023 at the Weyerhaeuser's Vail Tree Farm, in Rainier, Washington. We had over 40 exhibitors and approximately 5,000 attendees, which included students from a 50-mile radius, take in the show over the three-day period.

“Thank-you for your support and contribution to our Live in the Woods show,” says PLC President, Casey Black. “I thought it was a great show. We had good numbers and fabulous weather. And we had a good turnout from our equipment dealers and sponsors, and a tremendous turnout from volunteers to make the show happen.”

Black was also excited to be able to tour local political leaders through the show. “It allowed them to see a different and positive side of the forest industry.”

This year, the PLC brought students from 5th grade on up through 12th grade to introduce them to the forest industry as well as career opportunities and pathways into our industry. Each class was given an experienced forest professional to guide them through the show. It began with a forestry talk that was put together by Professor Kevin Lyons of OSU, and then continued through the live and static displays.

Teachers left pleased and much better informed. Some have already reached out to the PLC to see if a professional can come to their class to follow up on the information they learned.

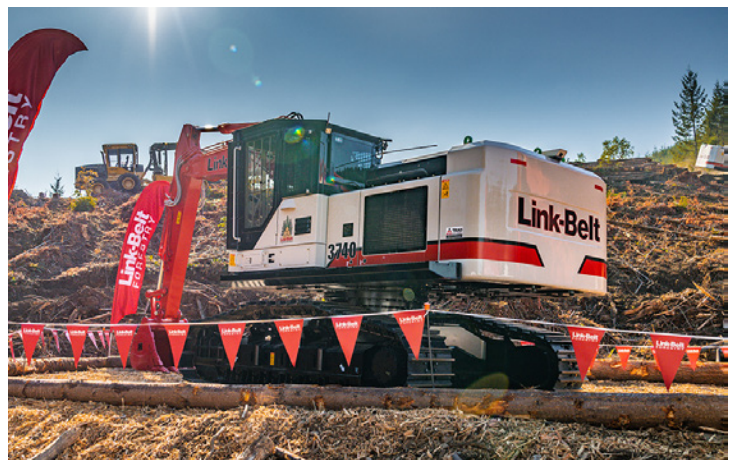
“This show is definitely a major undertaking and requires all hands on deck,” says Black. “I was really proud of the organization and what we were able to achieve for the industry. I hope that others feel the same.”

PICTORIAL OF THE PLC LIVE IN-WOODS SHOW

For those of you who couldn't make the PLC Live In-Woods show, or for those of you who want to relive some great moments, here's a glimpse of this year's event.

Photos by Colby Williams





PLC AUCTION RAISES OVER \$70,000

The 2023 PLC annual dinner and auction was one of the highlights of the PLC Live In-Woods event.

On Friday evening, the PLC hosted over 200 industry representatives at the Great Wolf Lodge. Our generous sponsors — Caterpillar, Peterson Cat, and Ritchie Bros. — helped make it a fun evening for kicking back, socializing ...and, of course, fundraising.

The Pacific Forest Foundation auction grossed approximately \$70,000. The funds will be used for scholarships and supporting other educational forestry programs and events.

One of the highlights was the auction of the ultimate bull elk tag, donated by Shasta Cascade Timberlands. Once the bidding was done and the dust had cleared, the tag had been auctioned off for a whopping \$41,000.

Since 2013, PFF has awarded over \$240,500 in forestry scholarships.

Thank you all for your generous support!

SOLD!

New PLC President — Roger Smith



Roger and Carmen Smith

On September 22, at the PLC auction dinner, the axe was passed from President Casey Black to PLC's new president, Roger Smith of R L Smith Logging.

Most of you involved with the PLC probably know Roger personally. But, for those that haven't had a chance to meet him in person yet, here is a little background.

Roger graduated high school in 1980, bought a pair of caulk boots, and received a college degree from the School of Hard Knocks. He started setting chokers at the age of 18 for his uncles, logging old growth in the high country and proceeded to buy his own business at the age of 29.

Thirty-two years later, R L Smith Logging Inc, expanded from those pre-processor days with only a tower and shovel, to now downsizing with just a grapple yarder and yoder side, three shovel sides, a skidder, 10 log trucks, and 33 employees. (He admits he has a long way to go.)

Roger's brother has been steep slope tether cutting for eight years and now he is breaking in the next generation. Roger's nephew is purchasing a 172 Madill tower side and a shovel side, and they continue to work together.

Roger has focused the last 10 years on the education of students on job opportunities in this industry. He visits classrooms and hosts field trips. He is a strong advocate for young blood in the industry.

He has always invested in technology and stresses teamwork with his crews.

Roger says his focus over the next couple years is to help create well-rounded business owners that won't just survive but thrive by investing in technology and safety. "We have to give young loggers a chance to grow and succeed."

What Roger likes about the PLC is, "You get to introduce our great industry to the public. It gives us the best chance to seek out young, respectable talent that is needed to replace all the loggers that are close to retirement."

Roger takes great pride in doing an excellent job for the clients he works for. He is on the Board of Directors for the WCLA Credit Union, the Olympic Logging Conference, and the PLC. He also is part of the Washington State Loggers Safety Initiative Board and Accident Investigation Board.

On a more personal note, he enjoys walking nice stands of timber, golfing, and family life. He has been married for almost 42 years to Carmen who mans the office. He also has a son, daughter, 4 granddaughters and a grandson.

The PLC looks forward to a great year under his leadership.

Thank you to our Volunteers and Sponsors

The show is only as good as its volunteers, and the PLC has some of the best. Forestry professional came from as far as B.C. and California to make this show the best it could be.

Volunteer Coordinator Carmen Smith worked tirelessly over the months ahead of the show and says in the end there were approximately 190 volunteers who stepped up. These individuals handled everything from moving in equipment to touring students and teachers, to working registration. Our hats to off to you all!

Sponsors

This event could not have been possible without our amazing sponsors. In addition to all the costs that go into a live show, this year, the PLC had the extra expense of the buses and drivers. This was no small expense, and our sponsors stepped up with their donations to ensure students had the opportunity to visit the show.

We can't thank you enough for your tremendous support.

PLATINUM



GOLD

Alta Forest Products
Cascade Hardwoods
Caterpillar
Chilton Forest Management
Empire Cat
Grays Harbor
Community Foundation
Green Diamond
Hampton Lumber
Interfor
JGP Peterbilt
Mike Pihl Logging
Port Blakely
Ritchie Bros.
Roseburg Forest Products
S&W Logging
Sierra Pacific Foundation
Superior Tire
Technical Forest Solutions
Triad Machinery
Trinity Lumber Co.
WASIC
Western Forest Products

SILVER

AgWest
Bennet Lumber Products
Bitco
Boise Cascade
Campbell Global
Cascade Timber Consulting
Columbia Western Machinery
Crane Mills
Creekside Logging
Erickson Logging Inc.
FWS Forestry
Hadaller Logging
Hubster Logging
Jeff Unger Logging
L&L Inc.
Louisiana Pacific
Manke Lumber
Melcher Logging
Merrill & Ring Forest Products
Morris Logging
MVR Cutting

North Fork Lumber Co.
Nygaard Bros. Logging
Paragon Insurance Group
Peterson Cat
Peterson Timber
Potlatch Deltic
R L Smith Logging
Rayonier
Redwood Empire Sawmill
Robinson Enterprises
Schmidbauer Lumber Co.
Shasta Cascade Timberlands
Shasta Sustainable Resource
Management
Southport Lumber Co.
Stella-Jones Corporation
Sun Mountain Lumber
T-Mar
Tahoe Forest Products
Tim Brown Logging
Western Timber Inc.
Wilcox & Flegel

BRONZE

Harrison Logging
Manulife Investment
Management
Mefford & Son Inc.

Mountain Pacific
Pacific Log Processing
Roberts Supply
Sierra Forest Products
Thompson River Lumb

Summer President's Meeting – Seattle Sheraton

Mark your calendars. The president's summer meeting will be held Sunday through Tuesday, July 21 - 23, 2024 at the Seattle Grand Sheraton, located in heart of the city.

Roger and Carmen Smith chose this venue, not only because of it's a beautiful hotel and easy to access from the airport, but because it's also an easy walk to many of Seattle's great restaurants, amazing shopping and fun features like Pike Place Market and Seattle Art Museum.

Registration will be available soon.



Hawaii Here We Come

After all the hard work put into a Live Wood Show, the PLC makes sure everyone gets a chance to relax the following year by holding its congress in Hawaii.

November 4-6, 2024, will be holding our annual meeting at the Kauai Beach Resort on the island of Kauai.

For those that haven't been to Kauai before, you're in for a treat. It's nicknamed "The Garden Isle" thanks to the tropical rainforest covering much of its surface. The dramatic cliffs and pinnacles of its Na Pali Coast have served as a backdrop for major Hollywood films, like Jurassic Park. There are miles of family friendly beaches and amazing hikes and activities.

We will be staying at the Kauai Beach Resort. It rests on 25 stunning beachfront acres, and guests can enjoy relaxing by one of their four swimming pools, complete with waterfalls and a waterslide.

Continue to check on the Pacific Logging Congress website for updates. You will be able to book your rooms soon.



Above: A student from Venture Academy tries her hand on double buck saw at the Santa Cruz Forestry Challenge, October 11 to 14.

Below: Etna High School student Jacob Holland uses a logger's tape to measure the diameter of a tree, one of the many skills learned at the 2023 Shasta Forestry Challenge, September 27 to 30.

FORESTRY CHALLENGE UPDATE

by Diane Dealey Neill

The fall 2023 Forestry Challenge event season is well underway, with 2 events in the bag and three to go. The first two events, the Shasta and Santa Cruz, had a strong emphasis on logging. At the Shasta Forestry Challenge students toured Shasta College's Heavy Equipment and Logging Operations (HELO) training site, hearing about it and the forestry program at Shasta College, watching a demo of the equipment, and getting to climb in the cabs after the demo.

At the Santa Cruz event, students toured an active logging site at the camp where they were staying. The operation was an emergency salvage harvest resulting from the CZU Lightning Complex of 2020. In addition, the Cal Poly San Luis Obispo Logging Sports Team put on a demonstration of many of their events and let the students try

their hand at double buck saw and axe throw.

The Forestry Challenge is an academic event for high school students in technical forestry and current forestry topics. Participants spend four days in the forest learning about the ecology and management of the forested landscapes that provide communities with water, recreational opportunities, wood products, and wildlife habitat. Youth benefit by better understanding the relationship of the forested environment to their community, by exposure to natural resource management as a potential career option, and by undertaking a rigorous critical thinking exercise which is timely and addresses current forestry topics such as wildfire, insects, and forest health.

